



MARINE  
CRANES

**BR** BRIMMOND  
ENGINEERED TO TRUST





## BRIMMOND ENGINEERED TO TRUST

We specialise in the design, manufacture, rental and repair of hydraulic, lifting and mechanical equipment for industry, from our base in Aberdeenshire, Scotland. Consistently meeting the demands of global clients in a range of sectors from Energy to Aquaculture for over 25 years, our successful track record is founded in our belief that every project is unique – and needs a uniquely engineered response.

### Every aspect of your brief

With over seven decades of collective engineering know-how and a strong focus on customer service, our expert team will work closely with you from the outset, prioritising safety and quality, to deliver cost-effective equipment fit for your project. Through the concept and design stages to manufacture and repairs, we carefully consider every aspect of your brief, from accessibility and operational integrity to climate conditions and time constraints.

### Exceptional equipment

Our expertise and collaborative, client-focused approach are clearly reflected in the resulting engineering – we produce exceptional equipment that is robust and reliable, and leads to better, safer and more efficient operations for our clients.

### Ideally positioned

We understand the benefits of a joined-up approach and our wealth of integrated products and services are as ideally positioned to cater for large-scale turnkey projects as smaller independent operations, from concept to fruition. Our products and services span four divisions: **Rental Equipment, Design & Manufacture, Refurbishment & Service** and **Marine Cranes**.

Brimmond provides lifting, mechanical and hydraulic equipment and services to industry across four divisions:

 RENTAL  
EQUIPMENT

 DESIGN &  
MANUFACTURE

 REFURBISHMENT  
& SERVICE

 MARINE  
CRANES

## MARINE CRANES

Catering for a range of settings from marine vessels to offshore platforms, we provide marine cranes to the Marine, Aquaculture, Offshore Renewable, Oil & Gas and Defence sectors.

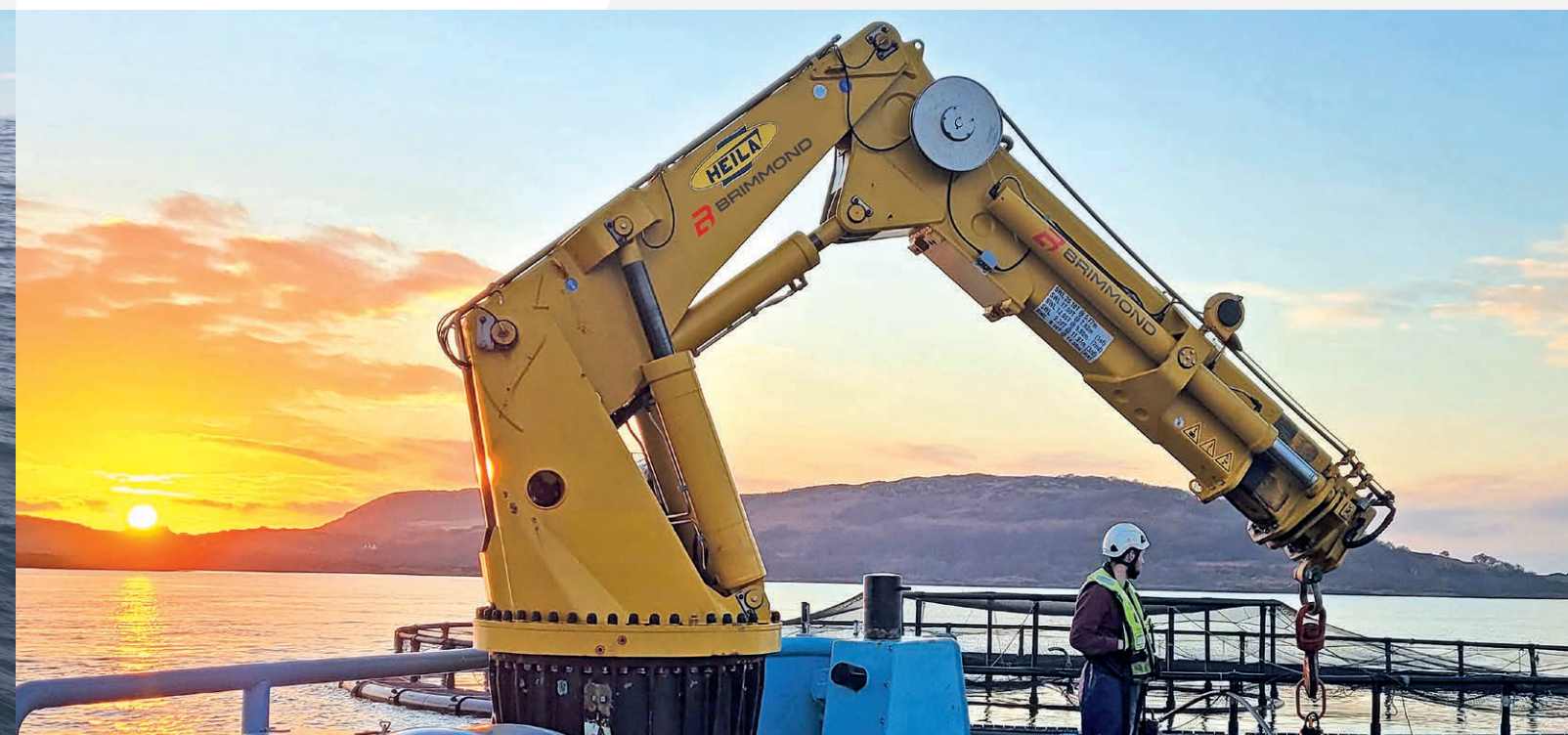
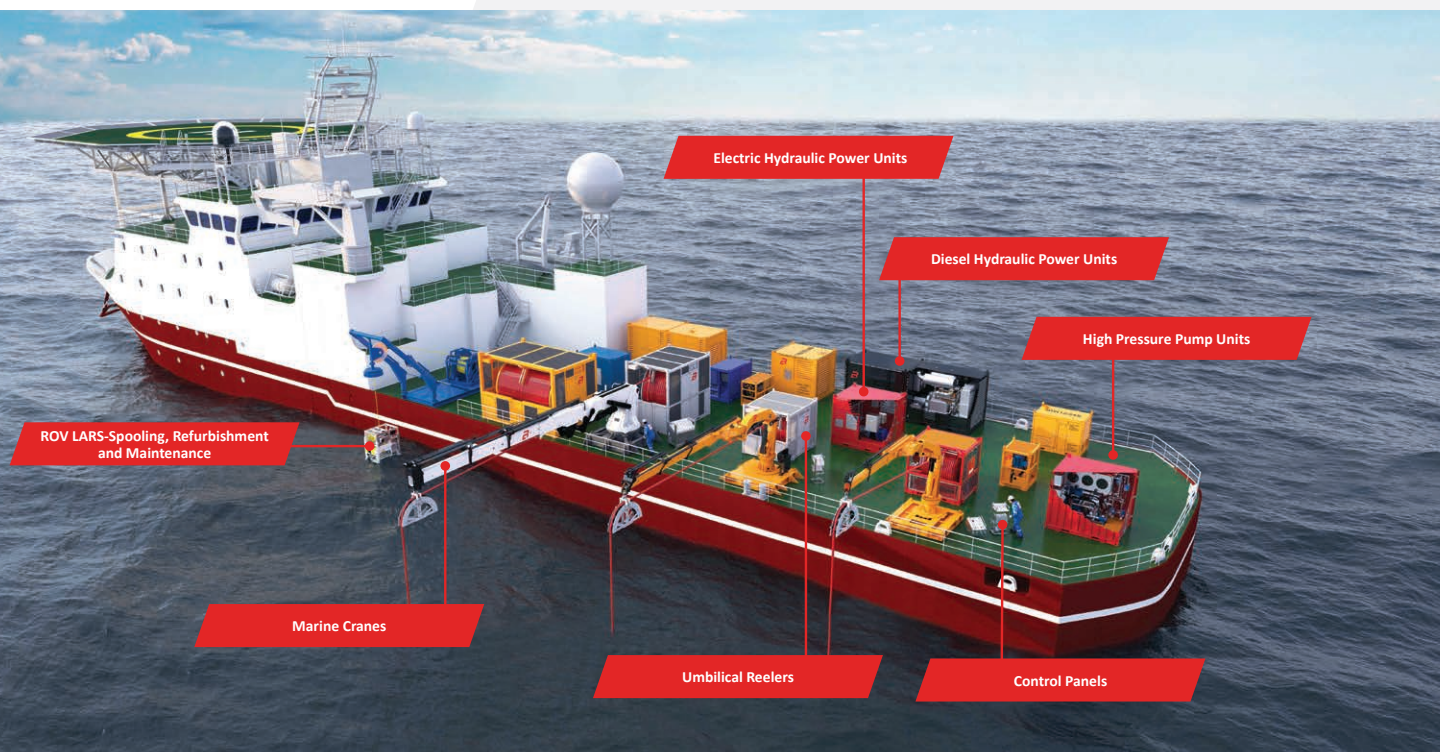
With a strong track record in successfully supplying and servicing marine cranes to suit client requests, we stock, rent, refurbish, repair and upgrade a diverse and ever-increasing range of new and second-hand marine cranes and associated lifting equipment.

Operating globally, we make purchasing, installing and maintaining marine cranes hassle-free by taking the time to understand your requirements and working with you from the initial crane specification to installation and commissioning, for a wide range of applications including:

- Tug, workboat, research and naval vessels
- Offshore and windfarm platforms and vessels
- Fishing boats and aquaculture vessels
- Offshore construction, supply and pipe lay vessels
- Remotely operated vehicle (ROV) launch and recovery, and dive equipment deployment

We also offer a complimentary range of services including:

- **Servicing:** onsite and offshore inspection, repair and maintenance by our team of service technicians.
- **Refurbishment:** capability to perform full refurbishments to 'as new' condition within our workshop.
- **Testing:** onsite and offshore function and load testing
- **Crane Operators:** Experienced crane operators available for onsite or offshore operational support.
- **Heila Cranes SpA:** as exclusive UK and Ireland distributor for the world leading Heila marine cranes, we provide their specialist, heavy-duty cranes to clients across a range of sectors, guaranteeing the highest levels of safety, reliability and efficiency on every project.
- **Effer S.R.L.:** Previously the UK distributor for Effer, we continue to provide servicing and support to existing Effer customers across the UK and Ireland.





## MARINE CRANES SUPPLY

- Major supplier of marine and offshore cranes
- Suitable for a range of platform and vessel projects
- New and second hand cranes kept in stock
- OEM spares in stock including winches and remote systems



## RENTAL MARINE CRANE PACKAGES

- Various size models, can be modified to suit specific projects
- Safe Area and ATEX options available
- Range of hydraulic power units available
- Modular systems for reassembly on platforms where platform lifting capacity has been reduced
- Accessories available, including clamshell buckets
- Crane Operators trained to BS7121 Part 11 Stage 2



## ONSITE/OFFSHORE CRANE TECHNICIANS

- Troubleshoot, diagnose and repair faults
- Static and dynamic load testing, performed to relevant standards
- Six monthly, annual & 5-yearly crane service and inspections
- Onsite fluid cleanliness, testing and flushing
- Familiarisation training, commissioning and load testing



## REFURBISHMENTS

- Refurbishment of marine cranes and associated equipment including winches and launch and recovery systems (LARS)
- Various levels of refurbishments to suit client budgets
- Full refurbishment includes detailed inspection of all components and repairs, replacements or upgrades made as required



## CRANE ASSOCIATED EQUIPMENT

- Hydraulic attachments including pipe grabs and buckets
- Load monitoring systems and test weights/water bags
- Remote control systems
- Upgrade and retrofit new systems onto clients cranes to provide compliance with ATEX and Norsok standards
- Winches including constant tension (CT)
- Personnel basket attachments



## POLAR RESEARCH VESSEL

- British Antarctic Survey vessel "RRS Sir David Attenborough"
- Six cranes engineered and manufactured by Heila
- Primary crane: capacity 50 ton @ 21.8 m (20 ton @ 35 m)
- Knuckle boom cranes: 3x 170 tonne-metre (txm)
- Non-telescopic jib cranes: 1x 200txm + 1x 300txm



## NEW BUILD WORKBOATS & LANDING CRAFT

- Meercat Workboats
- Operating in the Marine and Aquaculture sectors
- Various models supplied, ranging from 20txm to 65txm
- Compact fully folding knuckle boom to reduce space on deck
- Side mounted controls within protective cover plus radio remote control system



## AQUACULTURE VESSEL RENTAL CRANES

- Jifmar Offshore Services (Delta Marine & North West Marine)
- Four temporary cranes provided to replace older existing cranes
- Quick delivery allowed vessels to continue essential operations
- Engineering and manufacturing support to install cranes utilising existing foundation pedestals
- Removal, installation and full commissioning provided by onsite technicians



## NAVAL CRANE REFURBISHMENTS

- Naval offshore patrol vessels
- Six fully refurbished naval marine cranes to date
- Lloyds Register certified offshore models with relevant safety features
- Refurbished to 'as new' condition with maintenance providing an increased lifespan and ensuring continued safe and reliable operations



## MODULAR CRANE PACKAGES

- Fairfield Energy "Dunlin Alpha" platform and Shell "Brent Charlie" platforms
- Lifting solutions to support plug and abandonment (P&A) operations
- Removed reliance on older platform cranes with de-rated capacities
- Supplied in modular form to meet client requirements of de-rated platform lift capacity
- Reassembled in-situ by our team of offshore technicians







# Marine Crane Range Overview

## HEILA MARINE CRANES



Brimmond are delighted to be the exclusive UK & Ireland distributor, service partner and agent for Heila Marine Cranes. With over 700 customers worldwide, Heila is a global leader in the manufacture of specialist heavy-duty cranes.

Heila's reliable and efficient cranes are a result of 40 years of advanced manufacturing methods, which accommodate specific client requirements and international safety standards.

Following many years of collaboration with Heila, this official partnership with Brimmond allows us to offer an exceptional level of service to clients, as well as a greater range of products and enhanced delivery options.

Over the years Heila has earned the trust of some of the biggest names in the marine, dredging and offshore industries. With over 5,250 marine cranes manufactured and delivered to date, the company prides itself on prioritising quality and safety in the design of their equipment, alongside an impeccable level of customer service to clients across the globe.

Quality, reliability and service are Heila's unique selling points. The company has gathered together a group of true professionals who are reliable and skilled.

Neptune Shipyard BV

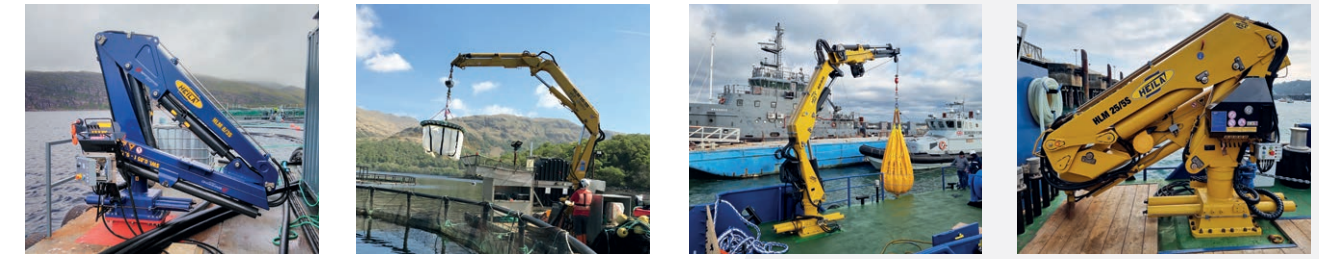
We prefer quality cranes for our vessels and value at the same time a good understanding and relationship with our suppliers. No problem for Heila: our long-term cooperation with Heila proves this.

Damen Shipyards, Hardinxveld



### FULLY FOLDABLE TELESCOPIC CRANES

HLM Range (rack and pinion slewing) 3txm – 25txm (outreach 3m – 15m)



MODEL	No of Ext		1st Ext	2nd Ext	3rd Ext	4th Ext	5th Ext	6th Ext	7th Ext	8th Ext
HLM 3	1S	Radius (M)	3.51	5.18						
		SWL (Kg)	1,110	750						
HLM 6	1S	Radius (M)	3.54	5.25						
		SWL (Kg)	1,710	1,160						
HLM 8	1S	Radius (M)	3.66	5.33	7.00					
		SWL (Kg)	1,460	1,000	760					
HLM 10	1S	Radius (M)	4.17	5.82						
		SWL (Kg)	2,330	1,680						
HLM 16	1S	Radius (M)	4.25	5.85	7.43					
		SWL (Kg)	2,110	1,520	1,200					
HLM 25	1S	Radius (M)	4.34	5.96	7.60	9.27				
		SWL (Kg)	1,780	1,250	950	770				
HLM 3	2S	Radius (M)	4.64	6.54						
		SWL (Kg)	2,310	1,650						
HLM 6	2S	Radius (M)	4.69	6.55	8.41					
		SWL (Kg)	2,280	1,620	1,260					
HLM 10	2S	Radius (M)	4.80	6.65	8.51	10.30				
		SWL (Kg)	2,120	1,490	1,140	940				
HLM 16	2S	Radius (M)	4.94	6.94						
		SWL (Kg)	3,440	2,460						
HLM 25	2S	Radius (M)	4.96	7.02	9.03					
		SWL (Kg)	3,350	2,330	1,810					
HLM 3	3S	Radius (M)	5.01	7.01	9.01	11.00				
		SWL (Kg)	3,090	2,150	1,640	1,330				
HLM 6	3S	Radius (M)	4.68	6.65	8.62					
		SWL (Kg)	5,170	3,640	2,820					
HLM 10	3S	Radius (M)	4.81	6.76	8.73	10.58				
		SWL (Kg)	4,940	3,470	2,660	2,200				
HLM 16	3S	Radius (M)	4.94	6.89	8.86	10.72	12.64			
		SWL (Kg)	4,700	3,280	2,490	2,020	1,710			
HLM 25	4S	Radius (M)	5.04	6.99	8.96	10.82	12.82	14.72		
		SWL (Kg)	4,520	3,100	2,320	1,850	1,450	1,200		

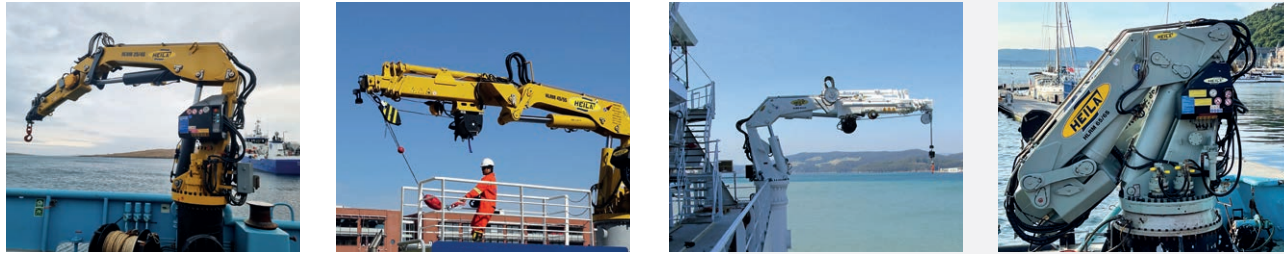




# Marine Crane Range Overview

## FULLY FOLDABLE TELESCOPIC CRANES

HLRM Range (slew ring) 10txm – 90txm (outreach 4m – 20m)



MODEL	No of Ext		1st Ext	2nd Ext	3rd Ext	4th Ext	5th Ext	6th Ext	7th Ext	8th Ext	
HLRM 25	2S	Radius (M)	4.68	6.65	8.62						
		SWL (Kg)	5,170	3,640	2,820						
	3S	Radius (M)	4.81	6.76	8.73	10.58					
		SWL (Kg)	4,940	3,470	2,660	2,200					
	4S	Radius (M)	4.94	6.89	8.86	10.72	12.64				
		SWL (Kg)	4,700	3,280	2,490	2,020	1,680				
5S	Radius (M)	5.05	6.99	8.96	10.82	12.82	14.72				
	SWL (Kg)	4,520	3,100	2,320	1,850	1,430	1,160				
HLRM-I 25	2S	Radius (M)	4.55	6.3	8.15						
		SWL (Kg)	6,150	4,420	3,200						
	3S	Radius (M)	4.68	6.43	8.28	10.23					
		SWL (Kg)	5,800	4,100	3,100	2,400					
	4S	Radius (M)	4.8	6.55	8.4	10.35	12.4				
		SWL (Kg)	5,560	3,850	2,900	2,200	1,730				
5S	Radius (M)	4.92	6.67	8.52	10.47	12.52	14.63				
	SWL (Kg)	5,250	3,650	2,680	1,910	1,460	1,190				
6S	Radius (M)	5.03	6.78	8.63	10.58	12.63	14.74	16.9			
	SWL (Kg)	5,000	3,400	2,400	1,750	1,320	1,050	880			
HLRM 35	2S	Radius (M)	5.21	7.16	9.15						
		SWL (Kg)	5,780	4,170	3,270						
	3S	Radius (M)	5.31	7.26	9.22	11.08					
		SWL (Kg)	5,480	3,940	3,050	2,490					
	4S	Radius (M)	5.41	7.36	9.33	11.18	13.1				
		SWL (Kg)	5,320	3,800	2,930	2,370	1,940				
5S	Radius (M)	5.51	7.46	9.43	11.28	13.3	14.79	15.18			
	SWL (Kg)	5,150	3,670	2,820	2,270	1,830	1,550	1,510			
5-SL	Radius (M)	5.52	7.72	9.93	12.13	14.33	16.49				
	SWL (Kg)	5,010	3,410	2,540	1,960	1,520	1,230				
HLRM 45	2S	Radius (M)	4.89	6.86	8.83						
		SWL (Kg)	8,210	5,870	4,570						
	3S	Radius (M)	5.02	6.97	8.93	10.79					
		SWL (Kg)	7,740	5,490	4,220	3,410					
	4S	Radius (M)	5.14	7.09	9.05	10.9	12.83				
		SWL (Kg)	7,580	5,410	4,170	3,180	2,470				
5S	Radius (M)	5.23	7.18	9.15	11.01	13.01	14.91				
	SWL (Kg)	7,290	5,170	3,790	2,830	2,180	1,750				

MODEL	No of Ext		1st Ext	2nd Ext	3rd Ext	4th Ext	5th Ext	6th Ext	7th Ext	8th Ext	
HLRM-I 45	2S	Radius (M)	4.63	6.13	7.93						
		SWL (Kg)	9,800	7,500	5,800						
	3S	Radius (M)	4.71	6.21	8.06	9.96					
		SWL (Kg)	9,500	7,200	5,550	4,200					
	4S	Radius (M)	4.73	6.23	8.08	10.02	12.04				
		SWL (Kg)	9,300	7,000	5,350	4,000	3,100				
	5S	Radius (M)	4.82	6.32	8.17	10.11	12.13	14.31			
		SWL (Kg)	9,000	6,800	5,100	3,800	2,900	2,350			
	6S	Radius (M)	4.91	6.41	8.26	10.2	12.22	14.39	16.66		
		SWL (Kg)	8,700	6,550	4,900	3,650	2,780	2,190	1,800		
	7S	Radius (M)	5.01	6.51	8.36	10.3	12.32	14.49	16.76	19.03	
		SWL (Kg)	8,400	6,300	4,700	3,450	2,600	2,000	1,630	1,380	
8S	Radius (M)	5.12	6.62	8.47	10.41	12.43	14.6	16.87	19.14	21.04	
	SWL (Kg)	8,150	6,150	4,600	3,250	2,415	1,865	1,500	1,235	1,080	
HLRM65	2S	Radius (M)	4.65	6.55							
		SWL (Kg)	13,720	9,920							
	3S	Radius (M)	4.77	6.67	10.67						
		SWL (Kg)	13,190	9,520	5,850						
	4S	Radius (M)	4.86	6.76	10.76	12.76					
		SWL (Kg)	13,230	9,490	5,450	4,360					
5S	Radius (M)	4.95	6.85	10.85	12.85	14.85					
	SWL (Kg)	13,140	9,620	5,220	4,140	3,440					
6S	Radius (M)	5.04	6.94	10.94	12.94	14.94	16.94				
	SWL (Kg)	13,610	9,790	5,250	4,150	3,430	2,940				
6SL	Radius (M)	5.52	7.82	10.2	12.58	14.98	17.38	19.78			
	SWL (Kg)	12,300	8,420	5,600	4,030	3,130	2,560	2,180			
HLRM-I 65	2S	Radius (M)	4.51	6.01	7.76						
		SWL (Kg)	15,500	12,000	9,200						
	3S	Radius (M)	4.55	6.05	7.91	9.81					
		SWL (Kg)	15,000	11,500	8,800	6,400					
	4S	Radius (M)	4.65	6.14	8	9.9	11.9				
		SWL (Kg)	14,500	11,000	8,400	6,200	4,900				
5S	Radius (M)	4.75	6.26	8.1	10	12	14				
	SWL (Kg)	14,000	10,500	8,000	6,000	4,600	3,750				
6S	Radius (M)	4.87	6.37	8.21	10.12	12.12	14.12	16.27			
	SWL (Kg)	13,300	10,100	7,700	5,600	4,300	3,500	2,900			
7S	Radius (M)	4.97	6.48	8.32	10.23	12.23	14.23	16.37	18.64		
	SWL (Kg)	13,000	9,800	7,500	5,500	4,200	3,400	2,750	2,350		
8S	Radius (M)	5.13	6.6	8.43	10.33	12.32	14.33	16.48	18.75	20.64	
	SWL (Kg)	12,000	9,200	7,000	5,000	3,800	3,000	2,500	2,200	1,900	
HLRM90	3S	Radius (M)	4.72	6.62	8.62	10.62					
		SWL (Kg)	17,910	12,990	9,720	7,330					
	4S	Radius (M)	4.82	6.72	8.72	10.72	12.72				
		SWL (Kg)	17,390	12,550	9,370	7,000	5,620				
	5S	Radius (M)	4.93	6.83	8.83	10.83	12.83	14.83			
		SWL (Kg)	17,070	12,290	9,110	6,760	5,390	4,460			
6S	Radius (M)	5.02	6.92	8.92	10.92	12.92	14.92	16.92			
	SWL (Kg)	16,530	11,930	8,430	6,240	4,950	4,110	3,480			



# Marine Crane Range Overview

## KNUCKLE BOOM CRANES

80txm – 1000txm (outreach 5m – 30m)



MODEL	No of Ext		1st Ext	2nd Ext	3rd Ext	4th Ext	5th Ext	6th Ext	7th Ext	8th Ext		
HLRM 80	2S	Radius (M)	6.13	8.13	10.13							
		SWL (Kg)	15,040	11,430	8,350							
	3S	Radius (M)	6.32	8.32	10.32	12.32						
		SWL (Kg)	14,450	11,020	7,910	6,180						
	4S	Radius (M)	6.55	8.55	10.55	12.55	14.55					
		SWL (Kg)	13,310	10,070	7,180	5,530	4,490					
HLRM 120	2S	Radius (M)	6.09	8.09	10.09							
		SWL (Kg)	19,170	14,400	11,540							
	3S	Radius (M)	6.11	8.11	10.11	12.11						
		SWL (Kg)	18,870	14,120	10,880	8,410						
	4S	Radius (M)	6.3	8.3	10.3	12.3	14.3					
		SWL (Kg)	18,040	13,500	10,720	8,260	6,730					
	3SL	Radius (M)	7.55	10.1	12.66	15.21						
		SWL (Kg)	14,670	10,680	7,960	6,090						
	4SL	Radius (M)	7.76	10.31	12.87	15.42	18.07					
		SWL (Kg)	13,960	10,110	7,430	5,610	4,480					
	HLRM 140	3S	Radius (M)	5.68	7.85	10.02	12.18					
			SWL (Kg)	25,030	18,380	13,270	10,320					
4S		Radius (M)	5.87	8.04	10.21	12.37	14.42					
		SWL (Kg)	23,130	17,030	12,220	9,480	7,850					
5S		Radius (M)	6.19	8.26	10.33	12.4	14.52	16.74				
		SWL (Kg)	21,170	15,680	12,360	10,170	8,360	7,020				
6S		Radius (M)	6.31	8.37	10.45	12.51	14.63	16.85	19.06			
		SWL (Kg)	20,550	15,230	11,980	9,830	8,040	6,730	5,730			
3SL		Radius (M)	7.51	10.06	12.62	15.17						
		SWL (Kg)	18,460	13,740	10,930	8,640						
4SLK		Radius (M)	7.69	10.24	12.8	15.35	18					
		SWL (Kg)	17,140	12,730	10,090	8,170	6,640					
HLRM 170	2S	Radius (M)	5.64	7.64	9.54							
		SWL (Kg)	27,950	18,200	13,440							
	3S	Radius (M)	5.88	7.95	10.02	12.08						
		SWL (Kg)	26,310	19,620	14,480	11,360						
	4S	Radius (M)	6.09	8.15	10.22	12.29	14.32					
		SWL (Kg)	25,200	18,830	14,980	12,130	10,030					
	3SL	Radius (M)	7.97	10.03	12.11	14.17						
		SWL (Kg)	19,220	15,270	12,250	9,780						
	4SL	Radius (M)	8.16	10.22	12.3	14.36	16.39					
		SWL (Kg)	18,450	14,630	11,620	9,230	7,700					

MODEL	No of Ext		1st Ext	2nd Ext	3rd Ext	4th Ext	5th Ext	6th Ext	7th Ext	8th Ext
HLRM 200	2SL	Radius (M)	7.58	9.75	11.92					
		SWL (Kg)	23,550	18,400	15,100					
	3SL	Radius (M)	7.6	9.77	11.94	14.1				
		SWL (Kg)	23,150	18,000	14,700	12,500				
	4SL	Radius (M)	7.82	9.99	12.16	14.32	16.37			
		SWL (Kg)	21,950	17,000	13,850	11,700	9,950			
20-4SL	Radius (M)	9.85	12.4	14.96	17.51	20.01				
	SWL (Kg)	17,600	13,550	11,000	9,250	8,050				
HLRM 230	4SL	Radius (M)	7.38	9.67	11.97	14.26	16.46			
		SWL (Kg)	29,730	22,350	16,580	12,860	10,560			
	4SLK	Radius (M)	7.44	9.73	12.03	14.32	16.52			
		SWL (Kg)	28,910	21,770	17,260	13,400	11,010			
HLRM 280	2SI	Radius (M)	9.08	12.08	15.08					
		SWL (Kg)	31,100	22,700	16,500					
	3SL	Radius (M)	9.48	12.48	15.48	18.48				
		SWL (Kg)	28,800	20,950	14,890	11,340				
4SL	Radius (M)	9.88	12.88	15.88	18.88	21.88				
	SWL (Kg)	26,680	19,290	13,370	10,000	7,970				
HLRM 440	2S	Radius (M)	8.69	11.25	14.09					
		SWL (Kg)	37,000	27,100	20,500					
	3S	Radius (M)	9.07	11.63	14.47	17.31				
		SWL (Kg)	35,000	26,000	18,500	14,400				
4S	Radius (M)	9.45	12	14.85	17.69	20.53				
	SWL (Kg)	32,500	24,300	16,800	12,900	10,500				
HLRM 460	2S	Radius (M)	10.62	13.67	16.72					
		SWL (Kg)	39,700	29,800	24,000					
	3S	Radius (M)	11.03	14.08	17.13	20.18				
		SWL (Kg)	36,500	27,000	21,300	16,700				
4S	Radius (M)	11.44	14.49	17.54	20.59	23.64				
	SWL (Kg)	33,500	24,500	19,000	14,400	11,700				
HLRM 580	2S	Radius (M)	10.58	13.63	16.68					
		SWL (Kg)	46,500	35,300	28,000					
	3S	Radius (M)	10.98	14.03	17.08	20.13				
		SWL (Kg)	43,500	32,000	25,700	21,200				
	4S	Radius (M)	11.38	14.43	17.48	20.53	23.58			
		SWL (Kg)	39,700	29,500	23,000	18,700	15,700			
5S	Radius (M)	11.78	14.83	17.88	20.93	23.98	27.03			
	SWL (Kg)	35,200	26,200	20,500	16,200	13,700	11,700			
HLRM 1000	2S	Radius (M)	12.03	14.63	17.23					
		SWL (Kg)	68,000	54,500	45,500					
	3S	Radius (M)	12.51	15.11	17.71	20.31				
		SWL (Kg)	62,500	49,500	41,500	35,500				
	4S	Radius (M)	12.96	15.56	18.16	21.76	23.46			
		SWL (Kg)	57,000	44,500	37,500	31,500	26,500			
	5S	Radius (M)	13.44	16.04	18.64	21.24	23.94	26.64		
		SWL (Kg)	52,500	41,500	34,000	28,500	23,100	19,800		
	6S	Radius (M)	9.60	13.94	16.54	19.14	21.74	24.44	27.14	29.88
		SWL (Kg)	65,000	43,000	35,800	26,400	21,700	17,800	15,300	13,500





# Marine Crane Range Overview

## NON TELESCOPIC (STIFF BOOM + JIB CRANES)

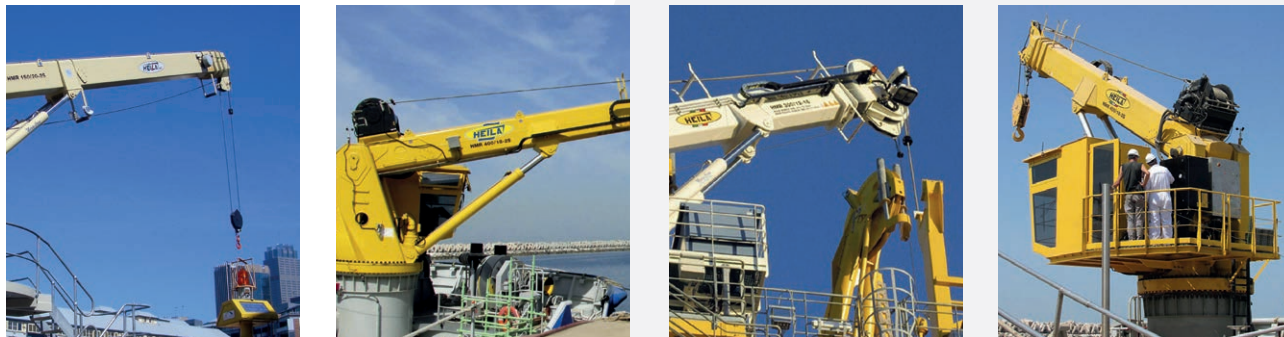
30txm – 1000txm (outreach 5m – 45m)



This crane range typically requires less maintenance due to there being fewer articulation points.

## TELESCOPIC BOOM CRANES

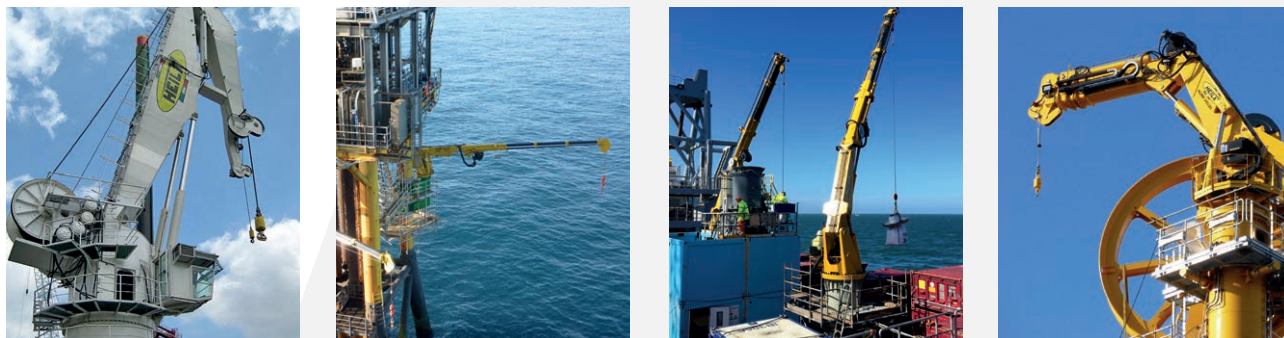
80txm – 1000txm (outreach 5m – 30m)



Lifting performed via installed winch and provided with hydraulic extensions without a knuckle function.

## OFFSHORE CRANES & AHC (ACTIVE HEAVE COMPENSATION)

80txm – 4000txm (outreach 5m – 45m)



Designed to suit clients individual offshore applications, Heila has invested significant effort to increase performance, reliability and efficiency. AHC is available with load and position control for subsea operations.

Offshore projects typically require involvement from the relevant classification society such as American Bureau of Shipping (ABS), Bureau Veritas (BV), Det Norske Veritas (DNV) and Lloyds Register (LR), from full design approval to single point schemes. With in-house design, manufacture, assembly and test, Heila cranes are designed to meet any required approval.

## BUILT FOR THE MARINE ENVIRONMENT

Heila, with 40 years of experience have developed their specific surface treatments, design aspects, welding technology and components to guarantee an extended product life of their cranes.

### Marine coating:

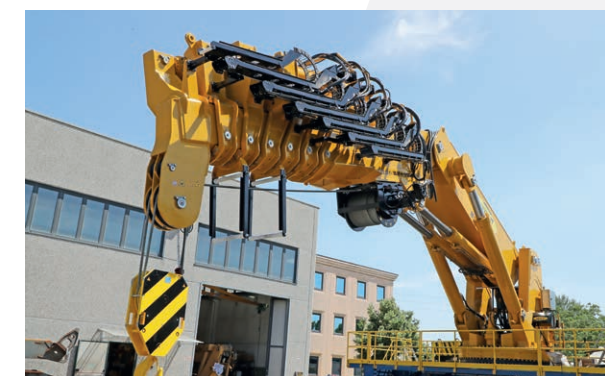
- All external and internal surfaces are treated for long-term corrosion resistance in accordance with ISO12944, with a total paint thickness of a minimum of 280 microns.
- On request, surface painting process in accordance with NORSOK M-501 rev. 6 System 2B with 4 layers and a total thickness of minimum 330 microns or NORSOK M-501 rev. 6 System 2B with a thermal sprayed aluminium and zinc base layer and a total thickness of minimum 350 microns, can be provided.

### Cylinder rod treatment:

- Heila standard cylinder rods are nickel-chrome plated, with 40 microns of nickel and 40 microns of chrome plating, giving a high level of corrosion resistance and durability. These rods are suitable for the worst environmental conditions.

### Pins:

- The structural pins which hold the boom sections together are chrome plated and feature an anti-rotation locking system to DIN 15058 to ensure wear of the steel sections is kept to a minimum. A stainless-steel plate locks the pin and is fastened with stainless-steel bolts.



### Hydraulic fittings:

- Standard fittings on hydraulic hoses are zinc-cadmium plated. To further reduce the risk of corrosion, a vulcanized rubber tape is manually applied on each hydraulic connection. This ozone free tape seals the connection from the elements. On request, hose fittings can also be provided in stainless-steel.

### Hydraulic pipelines:

- All hydraulic pipelines are of 316L stainless-steel, with 316L stainless-steel tube fittings.

### Slew bearing bolts:

- Slew bearing bolts are coated with GEOMET® 500 Grade B treatment, which provides a high degree of corrosion resistance when tested in accordance with ISO9227. This coating is a thin, dry-film coating which is self-lubricating and can withstand mechanical damage without compromising the corrosion resistant properties. Bolts are then plastic capped to give the final protection against the environmental conditions.

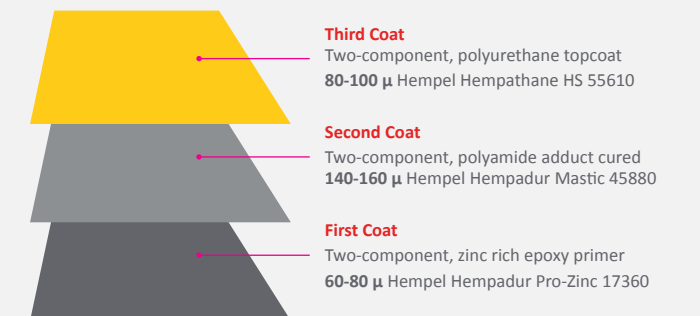
### Stainless steel junction boxes and enclosures:

- The stainless-steel boxes are specifically designed for the most rigorous of industrial applications and come as standard with IP66 protection.

### Further protection:

- Where appropriate, socket-head capscrews are manually protected by sealer following the initial two paint coats, to reduce the risk of corrosion due to water stagnation. The final paint layer is then applied to give the highest level of protection. Sealer is also used around pins to prevent as much water ingress as possible to maximise the lifespan of the asset.

### Standard surface painting process





## REFURBISHMENT & ONSITE SERVICES

Brimmond can repair from the simplest of faults through to major overhauls.

### Refurbishments

A full refurbishment often provides a more cost and time effective option than purchasing a brand-new replacement crane. Brimmond's experienced team will accurately assess and report on the condition of the crane and provide a quotation with a scope of work that can be tailored to suit the client's budgets and timescale. The initial inspection can often be carried out at the client's site whilst the crane is operational, to thoroughly examine and assess for any operational issues.

During the refurbishment process, improvements and additions of any supplementary systems can be carried out, ensuring the crane is enhanced whilst working within classification society rules and OEM requirements.

### Onshore/Offshore Technicians

Our team can travel globally to your site to carry out servicing, maintenance and thorough inspections on your equipment and provide you with a comprehensive report on anything which is an issue now or may become one in the future.

Regardless of the scope of work, our team will be guided by three key values: we are dynamic, responsive and proud.

### DYNAMIC

We recognise the fluid nature of projects and are agile and creative in response to change. Where others see a challenge, we see an opportunity – to innovate, to think out of the box, to tweak, hone and refine. We regularly anticipate client requirements, drawing on our long-held experience in providing tailored engineering solutions for a wealth of scenarios in a wide range of sectors.

### RESPONSIVE

We listen to our clients and see their issues as our own. We are communicative, proactive and flexible, keen to collaborate and tackle challenges head on. We seek opportunities to demonstrate our expertise and go beyond the brief – and with a talented team and a diverse range of products and services, we're uniquely equipped to do so.

### PROUD

We are proud of our products and services, and proud of our people. We care about the quality of our equipment – every piece that leaves our workshop is subjected to rigorous testing and must meet the highest standards of safety and performance. We care about empowering our team, we pull together and strive to nurture individual talent and curiosity. We care about our clients, and consistently exceed their expectations through relationships that are transparent and collaborative.



### Our Facilities

Brimmond has a modern, purpose-built facility located on a 2.5-acre site which offers yard, office and workshop space including overhead cranes with a combined 40 tonne capacity.

- Test bed specifically designed for testing a diverse range of marine cranes, winches and associated equipment
- Well-equipped workshop to handle a wide range of equipment
- A range of cranes kept in stock, both new and second-hand
- OEM spare parts kept in stock and readily available

### Our Abilities

With a team of engineers, technical and support staff, we are well placed to provide customised crane packages for a wide range of projects and sectors, with technical support to back this up in the field.

We are experienced in providing our customers with a range of hydraulic, lifting and mechanical equipment to meet their needs.

We will support your project with our know-how and ability to provide 3D models, system schematics and procedures to cover the installation and commissioning of the equipment.





Tofthills Avenue  
Midmill Business Park  
Kintore  
Aberdeenshire  
Scotland, UK  
AB51 0QP

+44 (0)1467 633805  
info@brimmond.com



[www.brimmond.com](http://www.brimmond.com)

HLM 20/3S