

HEILA HLRM 170 4S MARINE CRANE



HEILA HLRM 170 4S MARINE CRANE

Brimmond's Heila HLRM170-4S Knuckle Boom Crane is a tough, reliable and high specification marine crane. The crane model is capable of hook lifts from 28,100kg @ 5.77m to 10,000kg @ 14.00m and can be used for a diverse range of applications such as:

- Tug, workboat, research and naval vessels
- Fish farms workboat cranes
- Decommissioning & renewable projects such as mattress recovery and well P&A support
- Pipe laying towers, ROV LARS and subsea equipment

Brimmond offer a range of complimentary equipment for rental; contact our hire team to find out how we can help you. For special projects, we offer a bespoke design solution, tailored to your requirements.

Toftills Avenue, Midmill Business Park,
Kintore, Aberdeenshire, Scotland, AB51 0QP, UK

+44 (0) 1467 633805
info@brimmond.com



www.brimmond.com

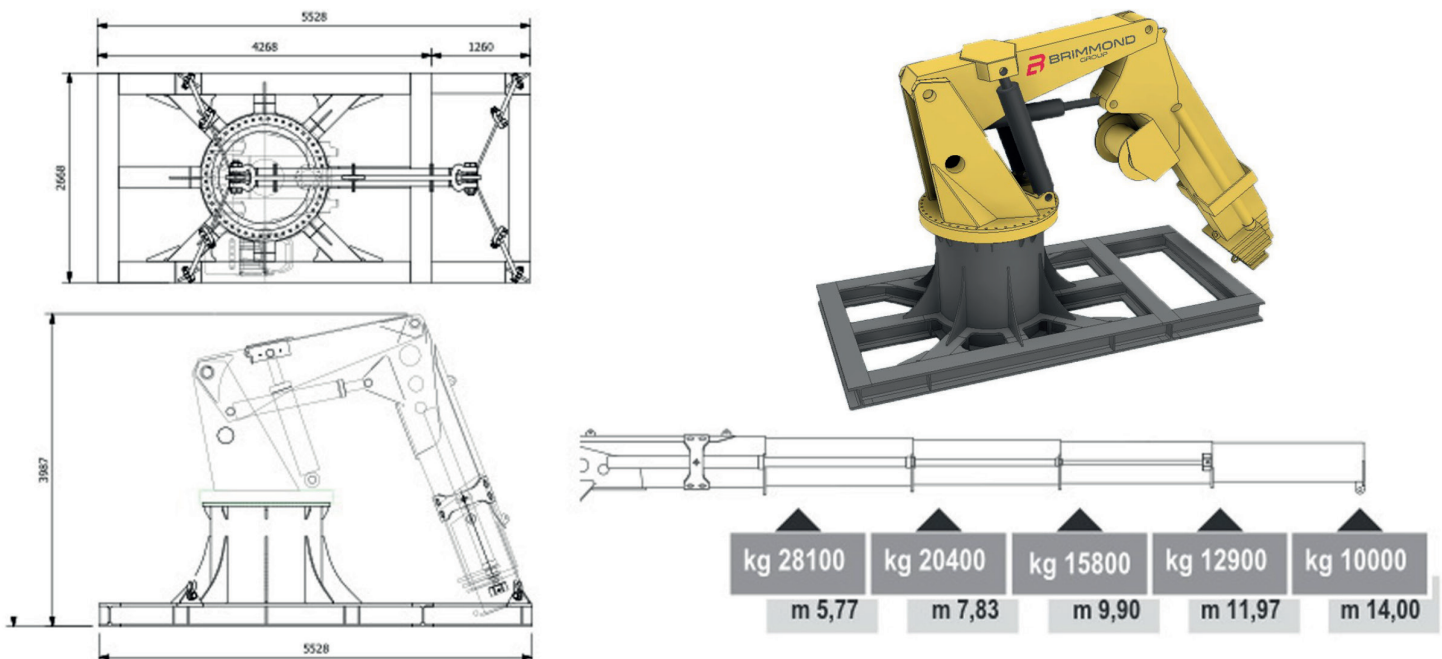
WORK AREA CLASSIFICATION

CE Suitable for Safe Area use only

TECHNICAL SPECIFICATION - STANDARD SUPPLY

CRANE MODEL	HLRM 170-4S
HYDRAULIC REQUIREMENTS	Supplied with Brimmond rental HPU
LIFTING CAPACITY	From 28,100kg @ 5.77m to 10,000kg @ 14.00m (on boom tip hook)
NUMBER OF EXTENSION SECTIONS	4 hydraulic extensions
SLEWING ARRANGEMENT	Slew bearing, unlimited slewing
WINCH TYPE	Dynamic Oil
WINCH CAPACITY	5 Tonne winch with double reeve block to 10 Tonne (other sizes available on request)
WINCH ROPE	To suit application
CONTROLS	Seated control station and remote control
SAFETY FEATURES	Load moment limit
DIMENSIONS	5528mm (L) x 2688mm (W) x 3987mm (H) - on skid base
WEIGHT	18,400kg (on skid base including spreader bar)
MOUNTING	Direct mount or supplied with skid base

MAIN DIMENSIONS



All information is correct at the time of printing. Brimmond reserves the right to make any changes to the above specification, without prior notice, with no impact on the overall unit performance.