

## HEILA HLM20-3S MARINE CRANE - ATEX ZONE 2



## HEILA HLM20-3S MARINE CRANE -ATEX ZONE 2

Brimmond's Heila HLM20-3S Foldable Knuckle Boom Crane is a compact and rugged crane which can handle up to 1700kg at a radius of 10.56m. It can be used in a variety of industries and is suitable for:

- ROV launch and recovery
- General cargo applications
- Deployment of equipment
- Material handling with clamshell bucket

Brimmond offer a range of complimentary equipment for rental; contact our hire team to find out how we can help you. For special projects, we offer a bespoke design solution, tailored to your requirements.



Tofthills Avenue, Midmill Business Park,  
Kintore, Aberdeenshire, Scotland, AB51 0QP, UK

+44 (0) 1467 633805  
info@brimmond.com



www.brimmond.com

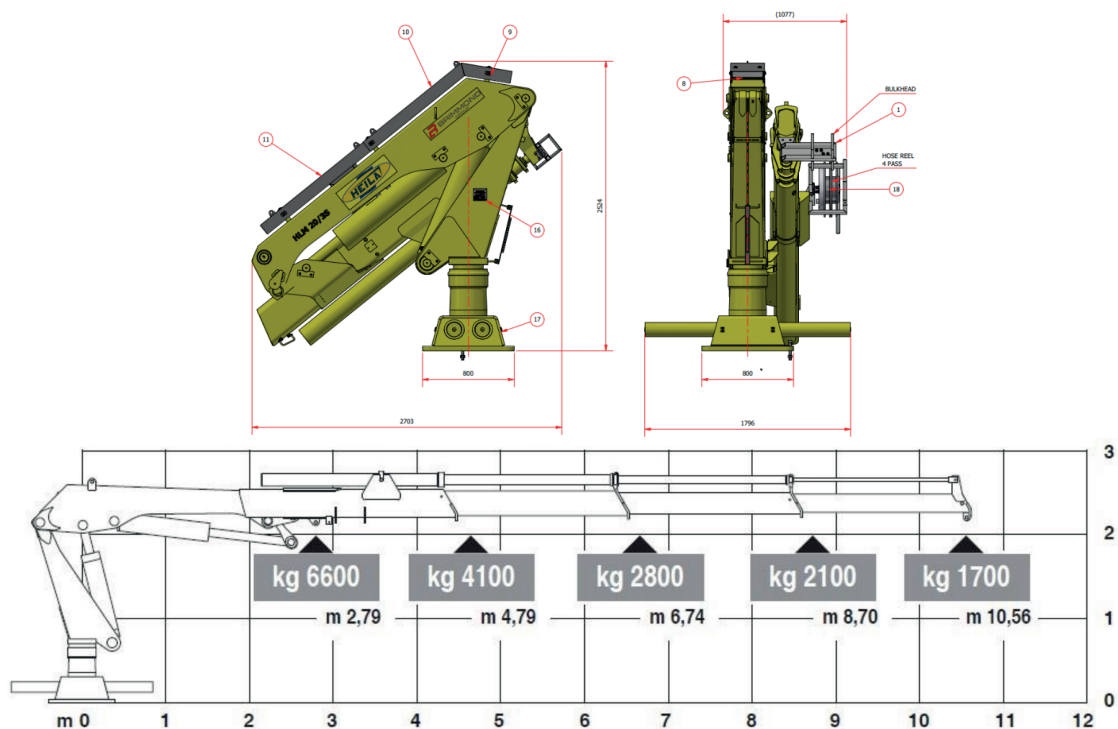
## WORK AREA CLASSIFICATION



 Group II Category 3 Gas Group IIB  
 Temperature Class T4

## TECHNICAL SPECIFICATION - STANDARD SUPPLY

|                              |   |
|------------------------------|---|
| CRANE MODEL                  | HLM20-3S  |
| HYDRAULIC REQUIREMENTS       | 45lpm @ 260bar  |
| LIFTING CAPACITY             | From 4,100kg @ 4.79m to 1700kg @ 10.56m                   |
| NUMBER OF EXTENSION SECTIONS | 3 hydraulic extensions                                    |
| SLEWING ARRANGEMENT          | Rack & Pinion, 400° limited slewing                       |
| WINCH TYPE                   | Various size options available                            |
| WINCH CAPACITY               | To suit crane model                                       |
| WINCH ROPE                   | To suit application                                       |
| CONTROLS                     | Local control station                                     |
| SAFETY FEATURES              | Emergency stop button                                     |
| WEIGHT                       | Gross 3050kg  |
| DIMENSIONS                   | 2703mm (L) x 800mm (W) x 2524mm (H)<br>in stowed position |

## MAIN DIMENSIONS



All information is correct at the time of printing. Brimmond reserves the right to make any changes to the above specification, without prior notice, with no impact on the overall unit performance.