

## EFFER 44M MARINE CRANE



## EFFER 44M MARINE CRANE

Brimmond's EFFER 44M-3S Foldable Knuckle Boom Crane is a compact and rugged crane which can handle up to 4512kg at a radius of 8.95m. It can be used in a variety of industries and is suitable for:

- General cargo movement
- Deployment of dredging equipment
- Launch and recovery of inspection class ROV's
- Deployment of divers tooling
- Divers golden gate

Brimmond offer a range of complimentary equipment for rental; contact our hire team to find out how we can help you. For special projects, we offer a bespoke design solution, tailored to your requirements.

Toftthills Avenue, Midmill Business Park,  
Kintore, Aberdeenshire, Scotland, AB51 0QP, UK

+44 (0) 1467 633805  
info@brimmond.com



www.brimmond.com

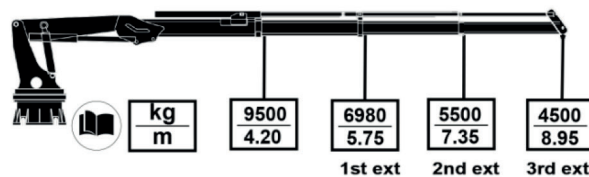
## TECHNICAL SPECIFICATION - STANDARD SUPPLY

CRANE MODEL	44M
HYDRAULIC REQUIREMENTS	50 litres/minute @ 290bar
LIFTING CAPACITY	From 9500kg @ 4.512kg @ 8.95m (on hook)
NUMBER OF EXTENSION SECTIONS	3 to 5 hydraulic extensions
SLEWING ARRANGEMENT	Slew bearing, 360° limited slewing (can be limited at client request)
SLEW MOTOR	One
WINCH TYPE	Dinamic Oil
WINCH CAPACITY	To suit crane model and client application
WINCH ROPE	To suit application
CONTROLS	Free standing control station
SAFETY FEATURES	Emergency stop button Overload protection Anti two-block
CYLINDER RODS	Marine grade nickel chrome plating
HOSES, FITTINGS & PIPES	All components are suitable and protected for a marine environment
WEIGHT	Gross 8,500kg
MOUNTING	Direct mount or supplied with skid base c/w sacrificial deck plates
DIMENSIONS	2900mm (L) x 2040mm (W) x 3000mm (H) in stowed position

## MAIN DIMENSIONS

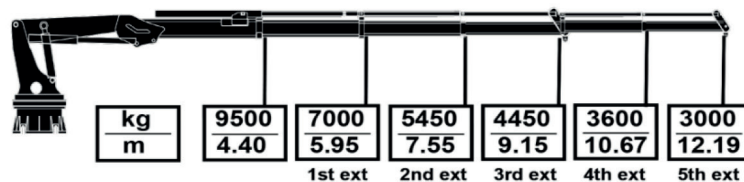


Boom Tip Jib Hook (w.o winch)



**Model 44M 3S**

Boom Tip Jib Hook (w.o winch)



**Model 44M 5S**

- Stated lifting capacities are for harbour or calm sea water conditions only.
- Installation of any additional equipment and the operating conditions will change stated SWL values.